

# Gunite Automatic Slack Adjuster

## Product Catalog and Cross Reference



Assembled in the USA



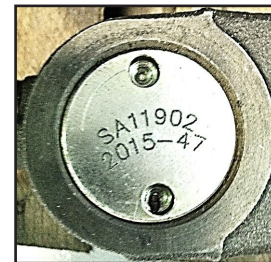
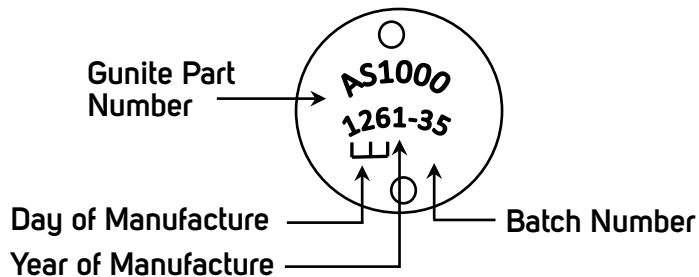
Your only single source for industry-leading wheel end solutions.  
STEEL & ALUMINUM WHEELS | DRUMS | HUBS | ROTORS | SLACK ADJUSTERS

## Gunite Automatic Slack Adjuster Identification

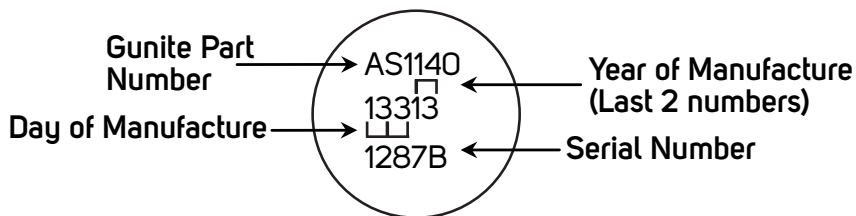
With the launch of Gunite's new state-of-the-art automatic slack adjuster assembly line there has been a change to the identification information formatting. The identification information now includes the part number, date code and serial number (TYPE II). The identification information is located on the end cap facing the brake chamber. Please reference the below illustrations for the identification information and formatting.

### Automatic Slack Adjuster Data Code Illustration

#### Type I



#### Type II



Please continue to supply the part number and date code information on all warranty claims as has been done in the past. For further information, contact Gunite Field Engineering at (800) 677-3786.

# TABLE OF CONTENTS

Identification.....	Inside Cover
Table of Contents.....	1
Warranty.....	2-3
Features and Benefits	
Automatic Slack Adjusters	
Other Brands Comparison.....	2
Numerical Listing	
Automatic Slack Adjusters.....	3
Clevis Kits.....	4
Service Kits.....	4
Axle Applications	
Front (Steer) Axle Applications.....	5
Rear (Drive) Axle Applications.....	5
Trailer Axle Applications.....	5
Obsolete Products	
Obsolescence Listing.....	6
Cross References	
Gunite Production to Gunite Aftermarket.....	7-10
OEM Part Number to Gunite.....	11-15
Other Brands to Gunite	
Bendix Corporation.....	16-19
Crewson Industries.....	19-21
Eagle.....	21-22
Dana/Eaton Corporation.....	22-25
Euclid.....	25-29
Haldex Brake Systems.....	29-34
Meritor.....	34-41
Haldex Brake Systems – Midland.....	41-44
Sloan.....	44

The Gunite® part numbering system is proprietary to Gunite Corporation. Any improper or unauthorized use of these numbering systems, including adoption or use of any Gunite part number, even where the subject is one of modification or addition, is strictly prohibited and will be prosecuted by Gunite Corporation as a violation of U. S. and foreign copyright, trademark, and unfair competition laws. In addition, use of any Gunite trademark, trade name, packaging scheme, system, color, or design is likewise considered a violation of the trademark, trade name, and trade identity rights of Gunite Corporation.

The interchange information shown in this catalog is based on the best available information at the time of publication. Although reasonable care has been taken to ensure the accuracy of this information, Gunite Corporation does not assume any liability for errors, changes, omissions, or harm resulting from the use of this information. It is recommended that all parts be thoroughly checked to ensure proper fit, form, and function prior to installation.



## ACCURIDE WHEEL END SOLUTIONS (AWES) LIMITED WARRANTY TO FILE A WARRANTY CLAIM, CALL (800) 869-2275 ext 1

Accuride Wheels and Wheel End Solutions (AWES) warrants to the original purchaser or the original end user that its products are free from defects in material and workmanship. The limited warranty time-frame (reference table below) is based on the date of product manufacture and shall be void if the product is altered, modified, misapplied, misused, neglected, repaired or not maintained in accordance with the instructions printed in the product-specific Accuride's Safety & Service Manuals<sup>(2)</sup>.

### GENERAL PRODUCT OVERVIEW

Product Type	8 years/ 96 months	5 years/ 60 months	2 years/ 200,000 miles <sup>(1)</sup>	1 year/ 12 months
Accuride Aluminum Wheels <sup>(2)</sup>		Industry Standard Aluminum Wheels Duplex <sup>®</sup> Aluminum Wheels ACCU-SHIELD <sup>®</sup> Wheels ACCU-ARMOR <sup>™</sup> Wheels	Flange Wear on ACCU-FLANGE <sup>™</sup> Wheels	
Accuride Steel Wheels <sup>(2)</sup>	EverSteel <sup>®</sup> <sup>(7)</sup> Corrosion Only <sup>(6)</sup>	Extra Service Wheels <sup>™</sup> (ESW) Styled Steel Wheels Tubeless Wheels and Demountable Rims Steel Armor <sup>™</sup> <sup>(6)</sup>		ProFinish <sup>™</sup> Corrosion Only <sup>(6)</sup> Duplex <sup>®</sup> Steel Disc Wheels Duplex <sup>®</sup> Demountable Rims Tube-Type Wheels & Demountable Rims Light Truck Wheels Steel Bolt-Together Specialty Wheels

Product Type	6 years/ 1,000,000 miles <sup>(1)</sup>	5 years/ 500,000 miles <sup>(1)</sup>	4 years/ 400,000 miles <sup>(1)</sup>	3 years/ 350,000 miles <sup>(1)</sup>	3 years/ 300,000 miles <sup>(1)</sup>	2 years/ 200,000 miles <sup>(1)</sup>	Limited Warranty <sup>(2)</sup>
Gunite Slack Adjusters <sup>(2)</sup>	Over-The-Road/Line Operated Trucks and Trailers <sup>(4)</sup>	Over-The Road/Line Operated Trucks and Trailers <sup>(3)</sup>	School Bus/City Delivery Vehicles <sup>(4)</sup>		School Bus/City Delivery Vehicles <sup>(3)</sup>  Severe Service: Garbage/Refuse Trucks, Fire Trucks, Logging, etc. <sup>(4)</sup>	Severe Service: Garbage/Refuse Trucks, Fire Trucks, Logging, etc. <sup>(3)</sup>	
Gunite Hubs <sup>(2)</sup>		TRU-SET <sup>®</sup> Trailer		TRU-SET <sup>®</sup> Front/Steer TRU-SET <sup>®</sup> Rear/Drive			Industry Standard Hubs
Gunite Brake Drums <sup>(2)</sup>							Industry Standard Brake Drums
Gunite Disc Brake Rotors <sup>(2)(5)</sup>							Industry Standard Disc Brake Rotors
Gunite Spoke Wheels <sup>(2)</sup>							Industry Standard Spoke Wheels

(1) Time or miles, whichever occurs first. Time is measured from date of manufacture.

(2) See Remedies and Limitations of Remedies and refer to appropriate Accuride guide for additional limited warranty condition details: Accuride Rim/Wheel Safety & Service Manual, Gunite Heavy-Duty Brake Drums, Gunite Automatic Slack Adjuster Service Manual, Gunite Disc Brake Rotors Maintenance Manual, and Gunite Disc Wheel Hubs, High-Performance Hubs, Spoke Wheels Maintenance & Installation Manual, and Steel Wheel Refinishing Criteria.

(3) Manufactured prior to April 6, 2015.

(4) Manufactured on or after April 6, 2015.

(5) Limited warranty for life of product.\*

\* "Life of product" means such period until the product has reached its maximum/minimum brake surface limitation. Product remains subject to the terms and conditions in this limited warranty, including the provisions on additional product warranty criteria and remedies and limitation of remedies.

(6) Designated steel wheels are covered by a limited warranty to be free of "rust damage" from the date of manufacture indicated on the wheel: ProFinish<sup>™</sup> for twelve (12) months, Steel Armor<sup>™</sup> for sixty (60) months and EverSteel<sup>®</sup> for ninety-six (96) months. Rust damage is defined as rust sufficient to require refinishing as determined by Accuride in accordance with the most current version of Accuride's technical bulletin W2.043 Steel Wheel Refinishing Criteria. The Steel Armor<sup>™</sup> and EverSteel<sup>®</sup> Warranties do not cover, and expressly exclude, rust in the crevice between the disc and the rim. The Steel Armor<sup>™</sup> and EverSteel<sup>®</sup> coating limited warranties herein apply to wheels manufactured by Accuride on or after January 1, 2017. EverSteel<sup>®</sup> wheels manufactured before January 1, 2017 may be covered by a prior sixty (60) month warranty which is not changed by this update.

(7) Limited Availability.

## **ACCURIDE WHEEL END SOLUTIONS (AWES) LIMITED WARRANTY TO FILE A WARRANTY CLAIM, CALL (800) 869-2275 ext 1**

### **ADDITIONAL PRODUCT SPECIFIC LIMITED WARRANTY CRITERIA**

**Wheels and Rims:** The warranty shall be void if the product is used with improper tire sizes, inflation pressures, or exceeded load ratings. The warranty shall be void if the product is not properly maintained in accordance with the Accuride Rim/Wheel Safety & Service Manual. The warranty does not cover defects resulting from corrosion except as stated elsewhere in this document, other non-Accuride components, accident, excessive speed or other abnormal or severe operating conditions.

**ACCU-ARMOR™, ACCU-SHIELD®, ACCU-FLANGE™, STEEL ARMOR™, PROFINISH™ and EVERSTEEL®:** Accuride does not cover the following conditions: (i) Any damage in the areas of the mounting surfaces, such as the area under the mounting nuts, the area in contact with hubs or drums and the area in contact with other wheels in dual position, (ii) Any damage due to cleaning, including damage from the use of abrasives, abrasive brushes, steel wool, scouring pads, strong chemicals or corrosion except as stated elsewhere in this document, and/or (iii) Any damage to the wheel finish due to wheel/tire assembly, removal, balancing weight, misuse, or chipping, whether by contact with road obstacles such as stones, gravel, curbs, barriers, signs, tire changing equipment or otherwise. ACCU-SHIELD® products are not covered for corrosion. ACCU-FLANGE® products, after washing, can have wheel polish or carnauba wax applied with a 100% cotton cloth. The STEEL ARMOR™ and EVERSTEEL® limited warranties are void with respect to, and expressly exclude, all wheels that have been refinished or refurbished and, for wheels used without an Accuride Wheel-Guard®, the disc face and any other areas impacted by this failure. The EVERSTEEL® limited warranty is void with respect to, and expressly excludes wheels that have had the serial number sticker removed or defaced. The STEEL ARMOR™, PROFINISH™, and EVERSTEEL® warranties expressly exclude and do not cover (a) paint appearance, paint integrity, or paint adhesion to the wheels due to chipping effect and (b) corrosion in the crevice between the wheel disc and rim. Accuride recommends cleaning wheels with mild soap and water.

**Standard Brake Drums, Spoke Wheels, Disc Wheel Hubs, Automatic Slack Adjusters, and Hardware:** The above warranty shall be void if (i) any goods have exceeded Accuride's acceptable wear limits or have been subjected to accidents or abnormal conditions of use, temperature, moisture, dirt or corrosive matter, or (ii) the product fails as the result of another manufacturer's product. The TRU-SET® disc wheel hub requires the use of a seller-approved hubcap and lubricant

### **REMEDIES AND LIMITATIONS OF REMEDIES**

In the event of any material breach of the above limited warranties, Accuride agrees to repair or replace,\* at its sole option, without charge any and all of its warrantable product that fail during normal use and service due to defects in material and/or workmanship, all subject to the original purchaser providing written notice of the alleged breach within 30 days of failure. Time is of the essence herein, and original purchaser's failure to provide written notice to Accuride within the required time of any alleged breach of the foregoing warranty will release and discharge Accuride from any obligation or liability for that breach of warranty. In no event will Accuride be liable for any other costs associated with the replacement or repair of product covered under this warranty, including labor, installation or other costs incurred by customer.

\* - NOTWITHSTANDING THE ABOVE, THE SOLE REMEDY UNDER THE STEEL ARMOR™ AND EVERSTEEL® WARRANTIES SHALL BE THE PAYMENT OF US \$35 FOR STEEL ARMOR™ AND US \$45 FOR EVERSTEEL® OR THE REPAIR OR REPLACEMENT OF THE WHEEL (AT ACCURIDE'S SOLE OPTION) IF A WARRANTABLE PRODUCT FAILS DURING NORMAL USE AND SERVICE DUE TO DEFECTS IN MATERIAL AND/OR WORKMANSHIP. Only one claim per wheel may be paid under the Steel Armor™ and EverSteel® warranties. The remedy described in this paragraph is Accuride's sole and exclusive obligation under these warranties and in no event will Accuride be liable for special, incidental or consequential damages.

Customer must timely report the breach of warranty and demonstrate warrantability under the then applicable procedures during the warranty period. The remedies set forth herein shall be the sole and exclusive remedies available to the original purchaser so that Accuride repair, replacement, or payment as described above is a fulfillment of all Accuride obligations. Accuride SHALL NOT BE LIABLE FOR ANY CONSEQUENTIAL OR INCIDENTAL DAMAGES OF ANY KIND. FURTHER, UNDER NO CIRCUMSTANCE SHALL ACCURIDE BE LIABLE FOR DAMAGES BEYOND THE PRICE OF THE GOODS PURCHASED BY THE ORIGINAL PURCHASER, WHETHER IN CONTRACT, IN TORT OR UNDER ANY WARRANTY OR OTHER USE.

Accuride reserves the right to require product return and/or washing (as previously noted) prior to warranty assessment as a condition of eligibility for warranty remedies. Product return expense must be paid by the product owner and if the product is found warrantable, reasonable freight expenses may be reimbursed by Accuride. No goods are to be returned to Accuride without a Returned Goods Authorization (RGA). If Accuride determines that any of the returned goods are non-warrantable, Accuride reserves the right to charge the original purchaser for the recovery of all transportation costs and expenses incurred in examining, processing and handling such goods. Any controversy or claim that customer may wish to bring that is arising out of or related to this limited warranty or breach hereof must be commenced in writing within 30 days of notification of warrantable status or shall be deemed to be waived.

Any product deemed non-warrantable is the property of the original purchaser and can be returned to the original purchaser upon its request and at its sole cost and expense. Should the non-warrantable item(s) not be reclaimed, Accuride will disposition the product no sooner than 30 days after original purchaser notification has been made.

For all warranty related questions, please contact your Accuride warranty administrator at (800) 869-2275 Option 1 or submit questions or claims to [warrantyadmin@accuridecorp.com](mailto:warrantyadmin@accuridecorp.com).

THE ABOVE WARRANTY IS THE SOLE AND EXCLUSIVE WARRANTY GIVEN BY ACCURIDE AND IS IN LIEU OF ALL OTHER WARRANTIES EXPRESSED, STATUTORY OR IMPLIED, INCLUDING WARRANTIES OF MERCHANTABILITY AND FITNESS FOR A PARTICULAR PURPOSE, ALL OF WHICH ARE EXPRESSLY DISCLAIMED BY ACCURIDE. IN NO EVENT SHALL THIS WARRANTY BE DEEMED TO COVER INCIDENTAL, SPECIAL, INDIRECT OR CONSEQUENTIAL DAMAGES OF ANY KIND.

## FEATURES AND BENEFITS

Gunite slack adjusters are proven, year after year, as the standard of the industry in providing superior performance, reduced maintenance costs and consistent, long-term reliability, trip after trip. You can depend on Gunite quality.

- 5", 5-1/2", 6", 6-1/2" Arm Lengths
- Straight or Offset clevis with 1/2" or 5/8" threads
- Unhanded design
- Compact housing for easy installation
- Drilled worm wheel
- Factory lubricated and sealed
- Extended life clevis pin bushing
- O-Ring on spline gear
- Available in 10, 24, 28, or 37 spline configurations
- Threaded and welded clevis applications



### FEATURES AND BENEFITS

Feature	Gunite	Meritor	Bendix	Stemco Crewson	Haldex
Sensing Type	Clearance	Stroke	Clearance	Clearance	Clearance
Clutch	Cone Clutch	Ratcheting	Torsion Spring	Cone Clutch	Cone Clutch
Clutch Spring	Belleville Springs	No Spring	Torsion Spring	Coil	Coil
Adjustment Occurs	On Apply	On Return	On Apply	On Return	On Return
Drilled Gear	Drilled	Drilled	Optional	Drilled	No
Gear Thread	Buttress	Buttress	Symmetric	Symmetric	Buttress
Non-Handed	Yes	No	Yes	Yes	Yes
External Attachments	No	No	No	No	Yes
SLIC Pin	Yes	No	No	No	No

Features and Benefits

Numerical Listings

Axle Applications

Obsolete Products

Cross References

## NUMERICAL LISTING

### GUNITE AUTOMATIC SLACK ADJUSTER KITS

Gunite P/N	Packaged Weight	Arm Length	Number of Splines	Splines Diameter	Clevis Kit
		A	B	C	D
AS1131	8.0	5"	10	1-1/2"	AS3016
AS1132	8.0	5-1/2"	10	1-1/2"	AS3019
AS1133	8.0	6"	10	1-1/2"	AS3016
AS1134	8.0	6-1/2"	10	1-1/2"	AS3016
AS1135	8.0	5"	10	1-1/4"	AS3019
AS1136	8.0	5-1/2"	10	1-1/4"	AS3019
AS1137	8.0	5"	24	1-1/4"	AS3019
AS1138	8.0	5-1/2"	24	1-1/4"	AS3019
AS1139	8.0	5"	28	1-1/2"	AS3016
AS1140	8.0	5-1/2"	28	1-1/2"	AS3019
AS1141	8.0	6"	28	1-1/2"	AS3016
AS1142	8.0	6-1/2"	28	1-1/2"	AS3016
AS1143 <sup>(1)</sup>	8.0	5-1/2"	37	1-5/8"	AS3018
AS1144 <sup>(1)</sup>	8.0	6"	37	1-5/8"	AS3018
AS1145 <sup>(1)</sup>	8.0	6-1/2"	37	1-5/8"	AS3018
AS1146 <sup>(1)</sup>	8.0	5-1/2"	10	1-1/2"	AS3018
AS1147 <sup>(1)</sup>	8.0	6"	10	1-1/2"	AS3018
AS1148 <sup>(1)</sup>	8.0	6-1/2"	10	1-1/2"	AS3018
AS1149 <sup>(1)</sup>	8.0	5-1/2"	28	1-1/2"	AS3018
AS1150 <sup>(1)</sup>	8.0	6"	28	1-1/2"	AS3018
AS1151 <sup>(1)</sup>	8.0	6-1/2"	28	1-1/2"	AS3018
AS1152 <sup>(2)</sup>	8.0	5-1/2"	10	1-1/4"	AS3002
AS1153 <sup>(3)</sup>	8.0	5-1/2"	10	1-1/4"	AS3003
AS1154 <sup>(2)</sup>	8.0	5-1/2"	24	1-1/4"	AS3002
AS1155 <sup>(3)</sup>	8.0	5-1/2"	24	1-1/4"	AS3003
AS1156 <sup>(3)</sup>	8.0	5-1/2"	10	1-1/2"	AS3003
AS1157 <sup>(3)</sup>	8.0	5-1/2"	28	1-1/2"	AS3003
AS1159 <sup>(4)</sup>	8.0	5-1/2"	37	1-5/8"	AS3021
AS1160 <sup>(4)</sup>	8.0	6"	37	1-5/8"	AS3021
AS1161 <sup>(4)</sup>	8.0	6-1/2"	37	1-5/8"	AS3021
AS1162 <sup>(4)</sup>	8.0	5-1/2"	10	1-1/2"	AS3021
AS1163 <sup>(4)</sup>	8.0	6"	10	1-1/2"	AS3021
AS1164 <sup>(4)</sup>	8.0	6-1/2"	10	1-1/2"	AS3021
AS1165 <sup>(4)</sup>	8.0	5-1/2"	28	1-1/2"	AS3021
AS1166 <sup>(4)</sup>	8.0	6"	28	1-1/2"	AS3021
AS1167 <sup>(4)</sup>	8.0	6-1/2"	28	1-1/2"	AS3021

Above referenced Automatic Slack Adjuster Kits are furnished with a Clevis that has a 1.02" pin center distance.

<sup>(1)</sup> Extended length Clevis included for trailer applications.

<sup>(2)</sup> .625" offset, 1/2" - 20 thread Clevis.

<sup>(3)</sup> .625" offset, 5/8" - 18 thread Clevis.

<sup>(4)</sup> Extended length collar lock Clevis with stainless steel pins.

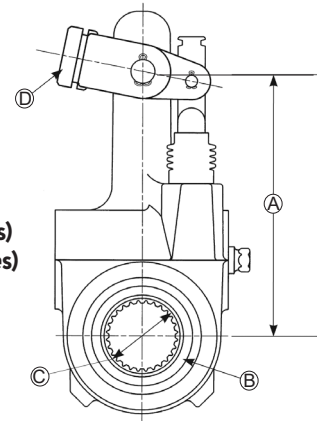
### GUNITE 2000 AUTOMATIC SLACK ADJUSTERS

Gunite P/N	Packaged Weight	Arm Length	Number of Splines	Splines Diameter	Clevis Kit
		A	B	C	D
AS1168	8.0	5-1/2"	10	1-1/2"	n/a
AS1169	8.0	6"	10	1-1/2"	n/a
AS1170	8.0	5-1/2"	10	1-1/4"	n/a
AS1171	8.0	5-1/2"	24	1-1/4"	n/a
AS1172	8.0	5-1/2"	28	1-1/2"	n/a
AS1173	8.0	6"	28	1-1/2"	n/a
AS1174	8.0	6-1/2"	10	1-1/2"	n/a
AS1175	8.0	6-1/2"	28	1-1/2"	n/a
AS2168 <sup>(1)</sup>	8.0	5-1/2"	10	1-1/2"	n/a
AS2169 <sup>(1)</sup>	8.0	6"	10	1-1/2"	n/a
AS2170 <sup>(1)</sup>	8.0	5-1/2"	10	1-1/4"	n/a
AS2171 <sup>(1)</sup>	8.0	5-1/2"	24	1-1/4"	n/a
AS2172 <sup>(1)</sup>	8.0	5-1/2"	28	1-1/2"	n/a
AS2173 <sup>(1)</sup>	8.0	6"	28	1-1/2"	n/a
AS2174 <sup>(1)</sup>	8.0	6-1/2"	10	1-1/2"	n/a
AS2175 <sup>(1)</sup>	8.0	6-1/2"	28	1-1/2"	n/a

Above referenced Automatic Slack Adjusters require the use of a Clevis with a 1.3" pin center distance. **DO NOT** attempt to install a Gunite 2000 Automatic Slack Adjuster using a Gunite standard (1.02" pin center distance) collar lock or threaded clevis kit, as this will cause improper brake function.

<sup>(1)</sup>The Enhanced Gunite 2000 design can be installed on a range of OEM applications currently in use today. It is recommended for use with vehicles manufactured after Phase I RSD requirements took effect in August 2011.

**VMRS**  
**#13-001-030 (Front Axles)**  
**#13-002-0028 (Rear Axles)**



# NUMERICAL LISTING

## VMRS #13-002-056 (Clevis)



Standard Length Threaded



Standard Length Collar Lock



Standard Length Threaded, Offset



Extended Length Threaded



Extended Length Collar Lock

### CLEVIS KITS - D

Gunite P/N	Packaged Weight	Clevis Type	Style	Push Rod Thread	Special Notes
AS3000	0.8	Threaded	Straight	5/8-18"	
AS3001	0.8	Threaded	Straight	1/2-20"	
AS3002	0.9	Threaded	5/8" Offset	1/2-20"	
AS3003	0.9	Threaded	5/8" Offset	5/8-18"	
AS3011 <sup>(5)</sup>	0.8	Threaded	Straight	5/8-18"	For applications with 5/8" Clevis Pins
AS3012 <sup>(5)</sup>	0.8	Threaded	Straight	1/2-20"	For applications with 5/8" Clevis Pins
AS3013	1.0	Extended Threaded	Straight	5/8-18"	
AS3015	1.0	Extended Threaded	Straight	5/8-18"	Furnished with Stainless Steel Clevis Pins
AS3016	0.8	Collar Lock	Straight	5/8-18"	
AS3017	0.9	Collar Lock	Straight	1/2-20"	
AS3018	0.9	Extended Collar Lock	Straight	5/8-18"	
AS3019	1.0	Collar Lock	Straight	1/2-20" & 5/8-18"	Furnished with (1) 1/2" and (1) 5/8" Collar Nuts
AS3021	0.9	Extended Collar Lock	Straight	5/8-18"	With Stainless Steel Clevis Pins

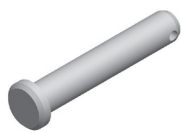
Above referenced Automatic Slack Adjusters Kits are furnished with a Clevis that has a 1.02" pin center distance. When installing or replacing a Gunite Automatic Slack Adjuster, it is recommended that a new clevis assembly be installed in accordance with the Gunite Automatic Slack Adjuster Service manual.



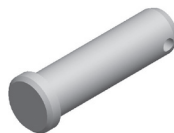
1/4" SLIC Pin



1/2" SLIC Pin



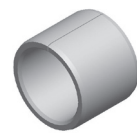
1/4" Clevis Pin



1/2" Clevis Pin



Cotter Pin



Arm Bushing

### SERVICE KITS

Gunite P/N	Packaged Weight	Description	Contents	Special Notes
AS4004	0.8	Clevis Pin Kit	(6) 1/2" Clevis Pins, (6) 1/4" Clevis Pins, (12) Cotter Pins	
AS4008	0.7	Installation Gauge	OEM Installation Gauge	
AS4012	0.9	Stainless Steel Clevis Pin Kit	(6) 1/2" Clevis Pins, (6) 1/4" Clevis Pins, (12) Cotter Pins	Stainless Steel Components
AS4013	0.5	Collar Lock Nuts	(4) 1-1/4" Locking Nuts, (4) 5/8"-18 Collar Nuts	
AS4014	0.5	Collar Lock Nuts	(4) 1-1/4" Locking Nuts, (4) 1/2"-20 Collar Nuts	
AS4015	0.4	Arm Bushing Kit	(24) 1/2" Steel Arm Bushings	
AS4650	0.7	Template	(50) Per Package	For Standard Slack Adjuster

NOTE: (#) equals quantity.

## AXLE APPLICATION

### FRONT (STEER) AXLE APPLICATIONS

Gunitite P/N	Packaged Weight	Arm Length		Splines Diameter	Clevis Kit
		A	B		
AS1135	8.0	5"	10	1-1/4"	AS3019
AS1136	8.0	5-1/2"	10	1-1/4"	AS3019
AS1152 <sup>(6)</sup>	8.0	5-1/2"	10	1-1/4"	AS3002
AS1153 <sup>(7)</sup>	8.0	5-1/2"	10	1-1/4"	AS3003
AS1170	8.0	5-1/2"	10	1-1/4"	n/a
AS2170	8.0	5-1/2"	10	1-1/4"	n/a
AS1132	8.0	5-1/2"	10	1-1/2"	AS3019
AS1168	8.0	5-1/2"	10	1-1/2"	n/a
AS2168	8.0	5-1/2"	10	1-1/2"	n/a
AS1137	8.0	5"	24	1-1/4"	AS3019
AS1138	8.0	5-1/2"	24	1-1/4"	AS3019
AS1154 <sup>(6)</sup>	8.0	5-1/2"	24	1-1/4"	AS3002
AS1155 <sup>(7)</sup>	8.0	5-1/2"	24	1-1/4"	AS3003
AS1171	8.0	5-1/2"	24	1-1/4"	n/a
AS2171	8.0	5-1/2"	24	1-1/4"	n/a
AS1140	8.0	5-1/2"	28	1-1/2"	AS3019
AS1172	8.0	5-1/2"	28	1-1/2"	n/a
AS2172	8.0	5-1/2"	28	1-1/2"	n/a

### REAR (DRIVE) AXLE APPLICATIONS

Gunitite P/N	Packaged Weight	Arm Length		Splines Diameter	Clevis Kit
		A	B		
AS1131	8.0	5"	10	1-1/2"	AS3016
AS1132	8.0	5-1/2"	10	1-1/2"	AS3019
AS1156 <sup>(7)</sup>	8.0	5-1/2"	10	1-1/2"	AS3003
AS1168	8.0	5-1/2"	10	1-1/2"	n/a
AS2168	8.0	5-1/2"	10	1-1/2"	n/a
AS1133	8.0	6"	10	1-1/2"	AS3016
AS1169	8.0	6"	10	1-1/2"	n/a
AS2169	8.0	6"	10	1-1/2"	n/a
AS1134	8.0	6-1/2"	10	1-1/2"	AS3016
AS1174	8.0	6-1/2"	10	1-1/2"	n/a
AS2174	8.0	6-1/2"	10	1-1/2"	n/a
AS1139	8.0	5"	28	1-1/2"	AS3016
AS1140	8.0	5-1/2"	28	1-1/2"	AS3019
AS1157 <sup>(7)</sup>	8.0	5-1/2"	28	1-1/2"	AS3003
AS1172	8.0	5-1/2"	28	1-1/2"	n/a
AS2172	8.0	5-1/2"	28	1-1/2"	n/a
AS1141	8.0	6"	28	1-1/2"	AS3016
AS1173	8.0	6"	28	1-1/2"	n/a
AS2173	8.0	6"	28	1-1/2"	n/a
AS1142	8.0	6-1/2"	28	1-1/2"	AS3016
AS1175	8.0	6-1/2"	28	1-1/2"	n/a
AS2175	8.0	6-1/2"	28	1-1/2"	n/a

### TRAILER AXLE APPLICATIONS

Gunitite P/N	Packaged Weight	Arm Length		Splines Diameter	Clevis Kit
		A	B		
AS1146	8.0	5-1/2"	10	1-1/2"	AS3018
AS1162 <sup>(6)</sup>	8.0	5-1/2"	10	1-1/2"	AS3021
AS1168	8.0	5-1/2"	10	1-1/2"	n/a
AS2168	8.0	5-1/2"	10	1-1/2"	n/a
AS1147	8.0	6"	10	1-1/2"	AS3018
AS1163 <sup>(6)</sup>	8.0	6"	10	1-1/2"	AS3021
AS1169	8.0	6"	10	1-1/2"	n/a
AS2169	8.0	6"	10	1-1/2"	n/a
AS1148	8.0	6-1/2"	10	1-1/2"	AS3018
AS1164 <sup>(6)</sup>	8.0	6-1/2"	10	1-1/2"	AS3021
AS1174	8.0	6-1/2"	10	1-1/2"	n/a
AS1149	8.0	5-1/2"	28	1-1/2"	AS3018
AS1165 <sup>(6)</sup>	8.0	5-1/2"	28	1-1/2"	AS3021
AS1172	8.0	5-1/2"	28	1-1/2"	n/a
AS2172	8.0	5-1/2"	28	1-1/2"	n/a
AS1150	8.0	6"	28	1-1/2"	AS3018
AS1166 <sup>(6)</sup>	8.0	6"	28	1-1/2"	AS3021
AS1173	8.0	6"	28	1-1/2"	n/a
AS2173	8.0	6"	28	1-1/2"	n/a
AS1151	8.0	6-1/2"	28	1-1/2"	AS3018
AS1167 <sup>(6)</sup>	8.0	6-1/2"	28	1-1/2"	AS3021
AS1175	8.0	6-1/2"	28	1-1/2"	n/a
AS2175	8.0	6-1/2"	28	1-1/2"	n/a
AS1143	8.0	5-1/2"	37	1-5/8"	AS3018
AS1159 <sup>(6)</sup>	8.0	5-1/2"	37	1-5/8"	AS3021
AS1144	8.0	6"	37	1-5/8"	AS3018
AS1160 <sup>(6)</sup>	8.0	6"	37	1-5/8"	AS3021
AS1145	8.0	6-1/2"	37	1-5/8"	AS3018
AS1161 <sup>(6)</sup>	8.0	6-1/2"	37	1-5/8"	AS3021

<sup>(6)</sup> .625" offset, 1/2" - 20 thread Clevis.

<sup>(7)</sup> .625" offset, 5/8" - 18 thread Clevis.

<sup>(8)</sup> Extended length collar lock Clevis with stainless steel pins.

## OBSOLETE PRODUCTS

### GUNITE PART NUMBER – WITH CLEVIS KIT INCLUDED

Obsolete Service Number	Gunite P/N-Direct Replacement	No Offset Front (Steer) Axles	.625" Offset Front (Steer) Axles		Rear (Drive) Axles	.625" Offset Rear (Drive) Axles	Trailer Axles
		Front (Steer) Axle Applications	.500-20 Thread	.625-18 Thread			
AS1000	AS1133				AS1133		AS1147
AS1001	AS1141				AS1141		AS1150
AS1002	AS1144						AS1144
AS1005	AS1136	AS1136	AS1152	AS1153			
AS1007	AS1138	AS1138	AS1154	AS1155			
AS1011	AS1138	AS1138	AS1154	AS1155			
AS1012	AS1140	AS1140			AS1140	AS1157	AS1149
AS1013	AS1135	AS1135					
AS1014	AS1131				AS1131		
AS1015	AS1137	AS1137					
AS1016	AS1139				AS1139		
AS1017	AS1137	AS1137					
AS1018	AS1139				AS1139		
AS1019	AS1132	AS1132			AS1132	AS1156	AS1146
AS1020	AS1140	AS1140			AS1140	AS1157	AS1149
AS1021	AS1143						AS1143
AS1025	AS1134				AS1134		AS1148
AS1026	AS1142				AS1142		AS1151
AS1031	AS1131				AS1131		
AS1032	AS1132	AS1132			AS1132	AS1156	AS1146
AS1033	AS1133				AS1133		AS1147
AS1034	AS1134				AS1134		AS1148
AS1035	AS1135	AS1135					
AS1036	AS1136	AS1136	AS1152	AS1153			
AS1037	AS1137	AS1137					
AS1038	AS1138	AS1138	AS1154	AS1155			
AS1039	AS1139				AS1139		
AS1040	AS1140	AS1140			AS1140	AS1157	AS1149
AS1041	AS1141				AS1141		AS1150
AS1042	AS1142				AS1142		AS1151
AS1043	AS1143						AS1143
AS1044	AS1144						AS1144